



# CIRCLE GRAPHICS FUEL OUTDOOR

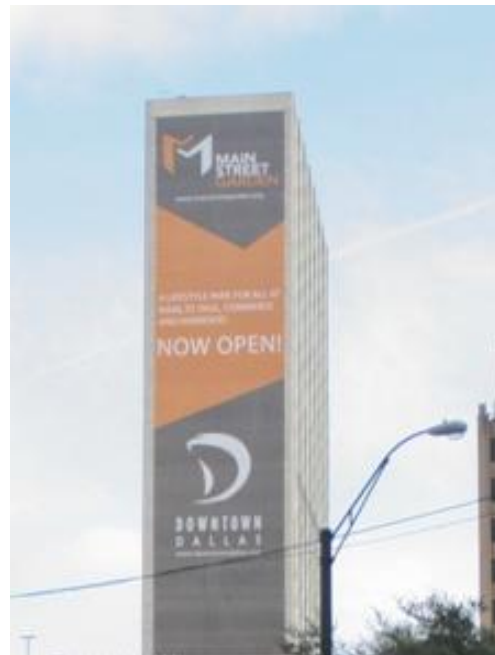
**Brand/Advertiser: Main Street Garden**  
**Product: One 212' x 52' Mesh Wall**

Fuel Outdoor has been a Circle customer since October 2008, and this huge wall mesh marked the first order placed directly through Fuel's president, Marc Miller, advertising Main Street Garden, a thriving public park and gathering place in the center of downtown Dallas.

This large wall mesh was quite challenging, not only because it was a massive 11,024 square feet (212' by 52'), but also because of the complex engineering required in the finished installation on the southwest-facing wall of the Sheraton Dallas Hotel building.

"This project was special because of how it involved several departments within Circle, including our engineering team," says Kristie Allbritten, the Circle Account Manager in charge of this project. "Given its size, this particular mesh involved some fairly complex installation needs, so our engineers talked directly to the local installation team to make sure we produced the best possible finishing solution.

Circle was able to turn this order around in just four days, resulting in a very pleased and impressed client.



"The Circle Graphics team did an excellent job on this campaign," praised Fuel's Marc Miller. "With a very quick turnaround, Circle was able to print and ship within four days. Circle is a pleasure to work with and a great production partner."